

## **ANIMAL HUSBANDRY (ALTERNATIVE A)**

*For candidates in Ghana only*

### **SCHEME OF EXAMINATION**

There will be three papers, Papers 1, 2 and 3, all of which must be taken. Papers 1 and 2 will be a composite paper to be taken at one sitting.

**PAPER 1:** Will consist of fifty multiple choice objective questions all of which must be answered within 1 hour for 50 marks.

**PAPER 2:** Will consist of six essay-type questions. Candidates will be required to answer four questions within 2 hours for 80 marks.

**PAPER 3:** Will be a practical paper for school candidates or a test of practical paper for private candidates. The paper will consist of four questions all of which must be answered within 2 hours for 60 marks.

### **SAMPLE QUESTIONS**

#### **PAPER 1**

#### **(OBJECTIVE TEST)**

1. Microbes in the rumen of farm animals are able to manufacture
  - A. vitamin A.
  - B. vitamin B.
  - C. vitamin D.
  - D. vitamin E.
  
2. Mange is caused by
  - A. fleas.
  - B. lice.
  - C. mites.
  - D. ticks.
  
3. Which of the following animal products is used in the production of buttons?

- A. Bone
  - B. Hoof
  - C. Horn
  - D. Skin
4. Parturition in sows is known as
- A. calving.
  - B. farrowing.
  - C. kindling.
  - D. lambing.
5. Which of the following types of chicken requires the highest percentage of protein in its diet?
- A. Grower
  - B. Layer
  - C. Breeder hen
  - D. Broiler hen
6. The average gestation period of a cow is
- A. 114 days.
  - B. 145 days.
  - C. 210 days.
  - D. 280 days.
7. The end product of herbage fermentation in the rumen of a cow is
- A. glucose.
  - B. glycerol.
  - C. amino acids.
  - D. volatile fatty acids.
8. A lamb with a fractured bone would require a feed containing more
- A. calcium.
  - B. carbohydrate.
  - C. iodine.
  - D. iron.
9. Which of the following parasites possesses hooks?
- A. Lice
  - B. Tick
  - C. Liver fluke
  - D. Tapeworm
10. One effect of heat stress on farm animals is
- A. reduced water intake.
  - B. increased feed intake.

- C. occurrence of abortion.
- D. occurrence of oestrus.

**PAPER 2**

**(ESSAY)**

1. (a) State **five** ways of controlling endoparasites in animal production. [4 marks]
- (b) Give **three** reasons why it is advisable to provide farm animals with a balanced diet. [6 marks]
- (c) Discuss **five** factors that affects the digestibility feed. [10 marks]
2. (a) State **five** objectives of animal improvement. [5 marks]
- (b) Mention **five** ways by which farm animals could regulate their farm temperature. [5 marks]
- (c) Explain how **each** of the following factors affect animal production in West Africa:
  - (i) rainfall;
  - (ii) temperature.[10 marks]

**PAPER 3**

**(PRACTICAL)**

1. **List of specimens**

Specimen **A** - Electric bulb  
Specimen **B** - Sawdust

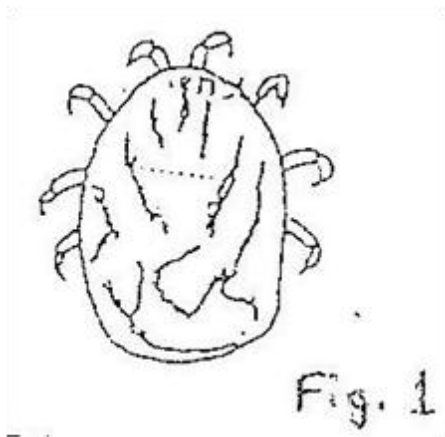
- (a) Identify **each** of specimens **A** and **B**. [2 marks]
- (b) State **two** main purposes for which specimen **A** is used in a broader house. [2 marks]
- (c) Name **two** other equipments that could be used as substitutes for specimen **A**. [4 marks]

- (d) Explain **two** disadvantages of the use of specimen **B** as litter material. [4 marks]

**PAPER 3**

**(TEST OF PRACTICAL WORK)**

1. The figure 1 below is an illustration of an endoparasite of farm animals.  
*Study it carefully and answer the questions that follow.*



- (a) Identify the parasite illustrated above. [1 mark]
- (b) State **two** characteristics of the parasite [2 marks]
- (c) (i) Name **two** farm animals that could be infected by the parasite.  
(ii) State **five** effects of the parasite on its host. [7 marks]
- (d) State **three** ways of controlling the parasite. [3 marks]